



c.700 Employees



20% Female



R&D centers in Canada, US, Israel and India



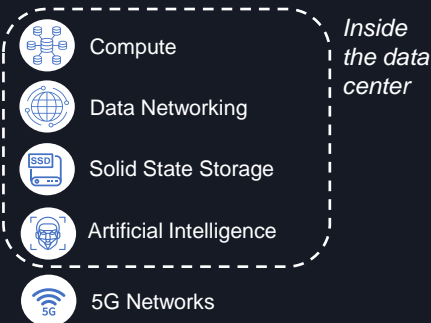
\$18bn Addressable Market by 2026¹

Alphawave Semi (LN:AWE) designs industry-leading, high-speed connectivity solutions for customers in high-growth infrastructure end markets. Our leading-edge technology advances push the boundaries of wired connectivity capabilities, enabling data to travel faster, more reliably, and using lower power.

Our business is driven by the exponential growth of data caused by the digitalisation of the economy and society, increasing requirements for higher speeds and data bandwidth, as well as sustainable data centers.

We monetise our high-performance IP through silicon and IP licences. A high-growth business combined with product cycles of over 7 years, results in high margins and strong cash flows.

End Markets: Digital Infrastructure



Customers Include

- More than half of top 20 semiconductor device companies²
- Hyperscalers
- Leading technology companies

Key Partnerships

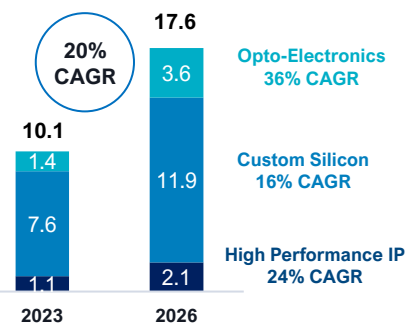
TSMC
2020-2022 OIP Partner Award
High-Speed SerDes IP Innovations

Samsung Foundry Partner for leading edge connectivity

Intel Foundry Service Accelerator – IP Alliance Leading Edge Connectivity

² By market capitalisation as of 19.04.23

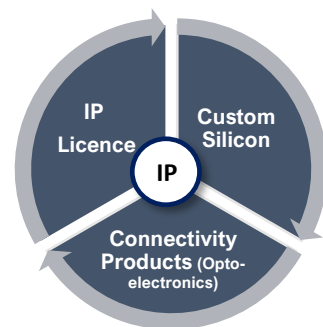
A Growing Addressable Market¹



Market Drivers

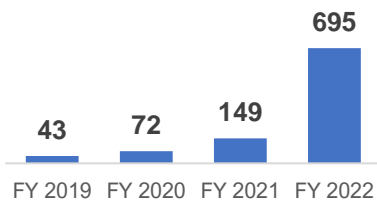
- Digitalisation drives exponential growth in data
- Data bandwidth doubles every 2-3 years driving a technology refresh of switches and transceivers
- High-speed and power-efficient connectivity technology is a key enabler
- Hyperscalers investing through the economic cycle

Vertically Integrated Business Model

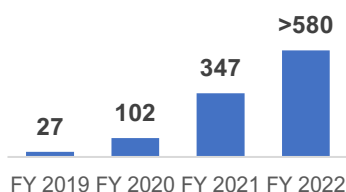


¹ Semico Research Corporation, December 2022, IPNest and LightCounting

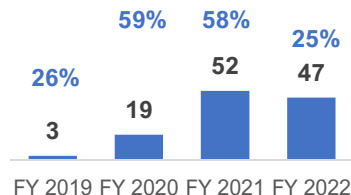
Employees (closing)



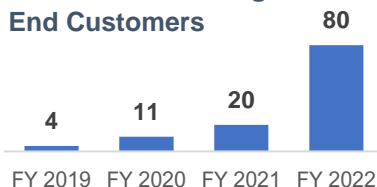
Cumulative Bookings (US\$m)



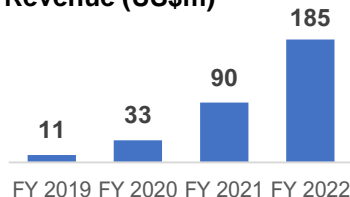
Adjusted EBITDA (US\$m) and %



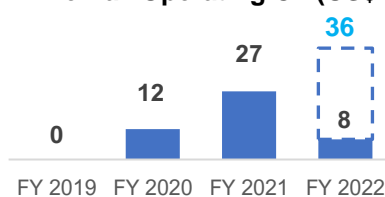
Revenue Generating End Customers



Revenue (US\$m)



Pre-Tax Operating CF (US\$m)



US\$36m, excluding US\$28m deferred compensation payments related to acquisitions

2022 Annual Report is available at [Results, Reports, and Presentations - Alphawave Semi](#)

Enquiries ESG@awavesemi.com

ESG Datasheet available at [Environmental, Social and Governance - Alphawave Semi](#)

Alphawave Semi is committed to conducting its business in an honest and ethical manner – acting professionally, fairly and with integrity in all its business dealings and relationships.

We contribute to society mainly by promoting diversity, fostering the next wave of innovation and innovators and playing our role in tackling climate change. We do this both through our own activities and in collaboration with our customers and other stakeholders, for shared success.

Key Focus Areas

Environment

- Committed to reduce carbon footprint and carbon neutrality
- Contribute to the decarbonization of the digital infrastructure with our technology and products

Supply Chain

- Responsible supply chain
- Responsible sourcing

Social Impact

- Invest in the development of talent and foster the new generation of innovators
- Promote a diverse and inclusive working environment
- Play a positive role in the communities where we operate

Governance and Business Ethics

- Maintain highest standards of corporate governance
- Acting professionally, fairly and with integrity in all its business dealings and relationships wherever it operates
- IT and cybersecurity

Environmental Performance

Our leading connectivity technology contributes towards the development of a more efficient digital infrastructure with lower energy consumption. Although fabless (i.e. we do not own any manufacturing facilities) we are committed to carbon neutrality and to reducing our carbon footprint over time. Responsibility for environmental performance sits with the Board. We govern our environmental responsibility through the application of the ESG Policy.

See 2022 Annual Report for TCFD compliance table (page 199)

Activity	Baseline year 2021	Baseline year 2022
In metric tonnes CO₂e		
Total Scope 1 emissions (natural gas)	14.18	208.86
Total Scope 2 emissions (electricity consumption)	6.33	341.49
Total Scope 3 emissions (transmissions and distribution, non-controlled electricity, hotel stays, homeworkers, well to tank, flights, hire car, taxi and grey fleet travel)	45.33	601.67
Total gross (Scope 1, 2 & 3) location-based emissions	65.84	1,152.02
Intensity ratios		
tCO ₂ e (gross Scope 1, 2 & 3) per employee	0.49	1.78
tCO ₂ e (gross Scope 1, 2 & 3) per US\$m revenue ¹	0.73	nm
Underlying energy consumption (kWh)		
Total global energy consumed	285,414	2,618,460
Total UK energy consumed²	273	na
UK-based emissions	0.1%	nm
UK-based energy consumption	0.1%	nm

1. tCO₂e (gross Scope 1, 2 & 3) per US\$m revenue reported as nm in 2022. Group FY 2022 revenue includes revenue from the acquisition of OpenFive from 31 August 2022 (closing date) but FY 2022 emissions baseline includes annualised contribution from the related locations in India and US. Considering the annualised contribution of these locations allowed for a more meaningful tCO₂e (gross Scope 1, 2 & 3) per employee comparison.
2. UK energy consumed in 2022 was calculated based on the kWh for home-working and it represented an insignificant portion of the total energy consumed. In 2021 it was calculated based on grey-fleet car mileage.

Supply Chain

In 2022 we expanded our economic activity to silicon. Although fabless we seek to play an active role in our value chain. Our main foundry and OSAT partners are leading companies in their sectors and have longstanding environmental programmes in place. Our manufacturing-related operations are ISO9001:2015 certified.

We support international efforts to ensure that the mining and trading of tin, tungsten, tantalum and gold (known as 3TG) from high-risk locations does not contribute to conflict and/or serious human rights abuses in the Democratic Republic of Congo and the Great Lakes Region (or elsewhere). See our conflict mineral policy. (View policy)

Our efforts include not just minimising the potential disruption risk but also certain sustainability aspects such as:

- Impact on human and labour rights (aligned to national legislation);
- Health and safety performance of our partners; and
- Environmental impact

See Supply Chain section in the 2022 Annual Report (pages 48-49)

Social Impact – People and Community Engagement

We have a wide range of initiatives seeking to recruit, develop and reward the best talent in the industry. We seek to create an entrepreneurial and dynamic culture where the best in our sector want to work and develop their careers in advanced technologies. Diversity and Inclusion fuel our success, tapping into the power of diverse perspectives and backgrounds. Our commitment to a diverse and inclusive culture is a key force that drives our innovation.

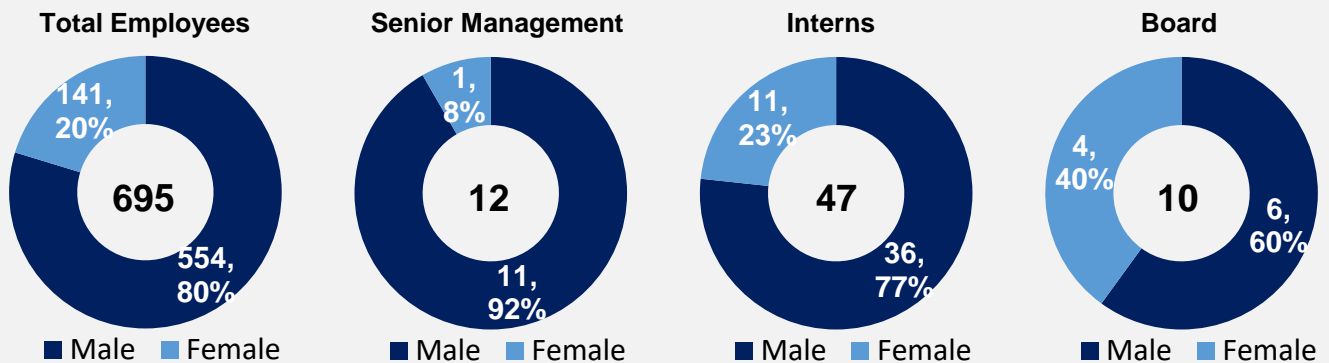
Our Equal Opportunities and Dignity at Work Policy and Code of Ethics and Business Conduct provide a solid framework to ensure all related activities are fully compliant.

We have internship programmes in place in Canada and India, where we have the highest number of employees. These programmes are built on strong relationships with the Universities of Toronto and Ottawa, as well as a group of universities in India such as KLE Tech University, University of Burdwan and CVR College of Engineering in Hyderabad.

See Our People section in the 2022 Annual Report (pages 35 to 41)

Gender Diversity FY 2022

Number of employees and %



Community Engagement

As an organisation, it is important that we play a positive role in the communities where we operate. Our community engagement programme seeks to improve the welfare of the communities where we work and live.

See 2022 Annual Report (page 54)

Alphawave Semi in India has partnered with Dream School Foundation (DSF) which provides educational support to unprivileged children. DSF strives to break the cycle of the socio-economic vulnerability of children and families and help them to help themselves through the power of education. It helps children and parents work through the path from ‘schools to livelihood’.

[Dream School Foundation - Alphawave Semi](#)

Governance and Business Ethics

We have a number of policies in place which define how we expect our employees and partners to conduct business. Our Code of Ethics and Business Conduct is directly informed by international, industry and customer standards.

Business Ethics – Applicable Policies

- Policy Against Trafficking of Persons and Slavery
- Anti-Bribery and Corruption Policy ensures compliance with global Anti-Bribery and Corruption (ABC) legislation
- Anti-Money Laundering Policy
- Anti-Fraud and Dishonesty ensures transparency and accountability in how the administrative processes are carried out and the decisions we make
- Whistleblowing Policy allows employees or associates to report potential issues such as potential bribery, fraud, health and safety risks, etc.

See Business Ethics section in the 2022 Annual Report (pages 52-53)

ESG Policies**ESG policies published on our website****ESG Policy****Supply Chain**

ISO9001:2015 certification

Conflict minerals

Our People

Equal Opportunities and Dignity at Work Policy

Accessibility Plan. Statement of Organisational Commitment

The Right to Disconnect Policy

Workplace Violence, Harassment and Discrimination Policy

Business Ethics

Code of Ethics and Business Conduct

Policy Against Trafficking of Persons and Slavery

Anti-Bribery and Corruption Policy

Anti-Money Laundering Policy

Anti-Fraud and Dishonesty

Whistleblowing Policy

IT Policies and Cybersecurity[Environmental, Social and Governance - Alphawave Semi](#)[ESG-Policy-vf.pdf \(awavesemi.com\)](#)[Custom Silicon - Alphawave Semi](#)[QAP-0019-01 Conflict-Free-Minerals-Sourcing-Policy.pdf \(awavesemi.com\)](#)[Equal-Opportunities-and-Dignity-at-Work-Policy-v2.pdf \(awavesemi.com\)](#)[Alphawave-Accessibility-Plan-Statement-of-Organizational-Commitment.pdf \(awavesemi.com\)](#)[The-Right-to-Disconnect-Policy-2022.pdf \(awavesemi.com\)](#)[Workplace-Violence-Harassment-Policy-v1.0.pdf \(awavesemi.com\)](#)[Business-Code-of-Conduct-v2.pdf \(awavesemi.com\)](#)[Policy-Against-Trafficking-of-Persons-and-Slavery.pdf \(awavesemi.com\)](#)[Anti-Bribery-Policy-v.1.1.pdf \(awavesemi.com\)](#)[Anti-Money-Laundering-Policy-v2.pdf \(awavesemi.com\)](#)[Anti-Fraud-and-Dishonesty-policy-v1.1.pdf \(awavesemi.com\)](#)[Whistleblowing-Policy-1.1.pdf \(awavesemi.com\)](#)[IT-Policies-and-Cybersecurity-12.04.23.pdf \(awavesemi.com\)](#)**2022 Annual Report is available at**[Results, Reports, and Presentations - Alphawave Semi](#)**ESG Datasheet available at [Environmental, Social and Governance - Alphawave Semi](#)****SASB Index Table and TCFD compliance statement can be found in the 2022 Annual Report and the ESG Datasheet****Enquiries ESG@awavesemi.com**